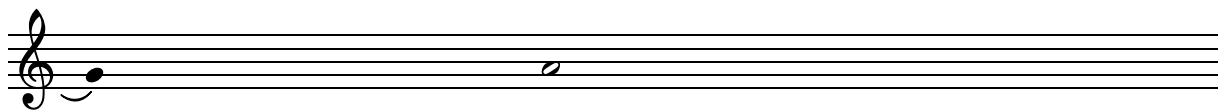


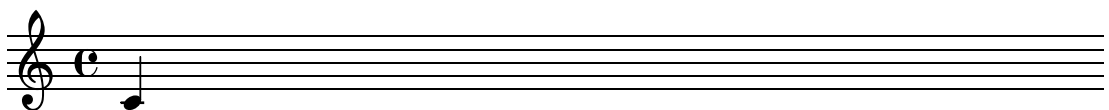
gregorian-transcription.ly

Modern transcriptions of gregorian music. Gregorian music has no measure, no stems; it uses only half and quarter notes, and two types of barlines, a short one indicating a rest, and a second one indicating a breath mark.



header.ly

The standard header that ought to be in top of a file.



jazz-combo.ly

Jazz tune for combo (horns, guitar, piano, bass, drums).

Trumpet

Alto Sax

Bari Sax

Trombone

Guitar

Piano

Bass

Drums

B Δ C \sharp m⁷

Solo

Cm Δ D Δ /9

melody-chords.ly

Lead sheet format: chords with melody.

Cm Fm⁷ G Δ C+ D $^{\circ}$ B

melody-lyrics-chords.ly

Popsong format: chords, melody and lyrics.

A C

Aaa Bee Cee Dee

melody-lyrics.ly

Melody and lyrics.



Aaa

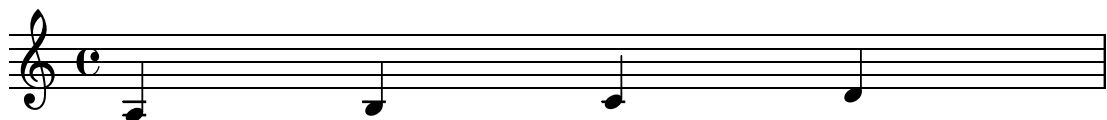
Bee

Cee

Dee

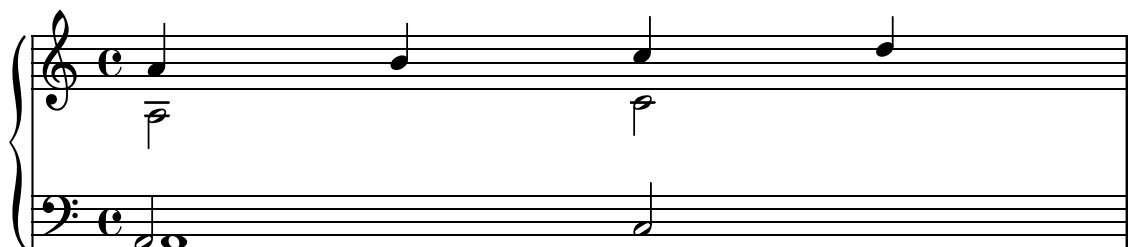
melody.ly

Only a melody.



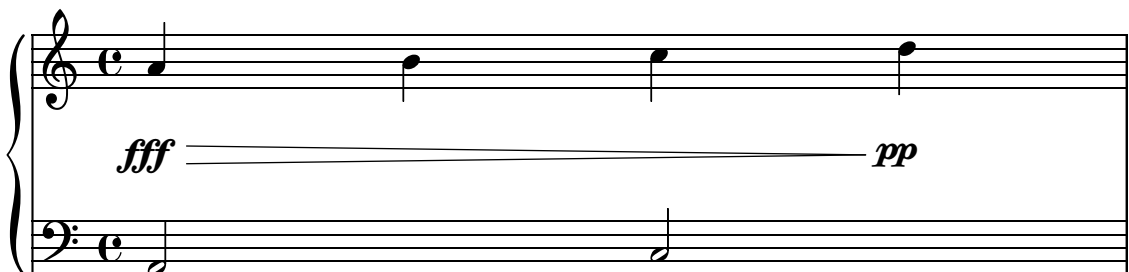
piano-4-voices.ly

Polyphonic piano music.



piano-dynamics.ly

Dynamics on a separate line, neatly centered between staves.

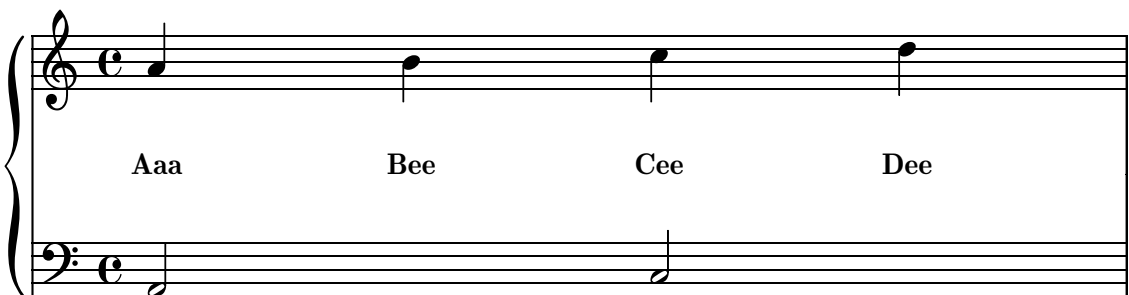


Red.



piano-lyrics.ly

Lyrics between two staves.



piano-melody-lyrics.ly

Classical song format: one staff with melody and lyrics, and piano accompaniment.

A musical score for piano. The top staff is a single melodic line with four notes: A4, B4, C5, and D5. Below the staff are the lyrics: Aaa, Bee, Cee, and Dee. The bottom staff is a piano accompaniment consisting of two staves. The right hand has four notes: A4, B4, C5, and D5. The left hand has two notes: A3 and D4.

piano.ly

Simple piano music.

A musical score for piano. The top staff is a single melodic line with four notes: A4, B4, C5, and D5. Below the staff are the lyrics: Aaa, Bee, Cee, and Dee. The bottom staff is a piano accompaniment consisting of two staves. The right hand has four notes: A4, B4, C5, and D5. The left hand has two notes: A3 and D4.

satb.ly

Four-part (SATB) vocal score.

A musical score for SATB vocal quartet. The top staff is a single melodic line with four notes: A4, B4, C5, and D5. Below the staff are the lyrics: hi, ha, hu, ho. The bottom staff is a piano accompaniment consisting of two staves. The right hand has four notes: A4, B4, C5, and D5. The left hand has two notes: A3 and D4.